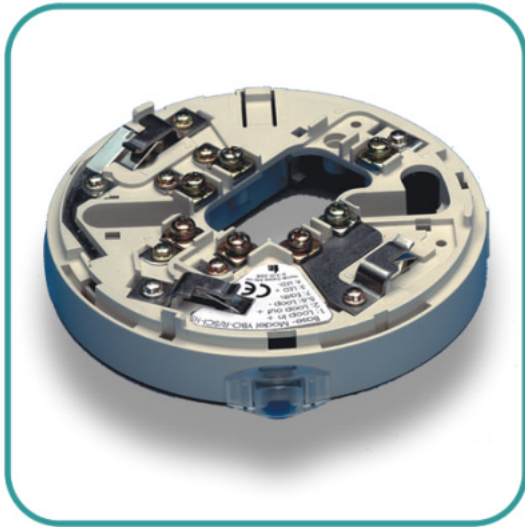


# Short-Circuit Isolator Base

## YBO-R/SCI



### Features

- ▶ Detects short circuits on loop
- ▶ Status LED
- ▶ Connection of up to 127 per loop
- ▶ Allows connection of Sensors from the ESP Range
- ▶ Bayonet slot, low insertion force for detectors
- ▶ Quick connection via square cable clamps
- ▶ Available as a DIN Rail Module

### Description

Model YBO-R/SCI is a Loop Isolator, which is fully compatible with Hochiki's ESP analogue addressable protocol.

The YBO-R/SCI Base is compatible with any of the ESP Sensors, and can be used instead of the standard YBN-R/3 Base, this reduces the cost of the Short Circuit Isolators and improves the functionality. The Base incorporates an amber LED to show when it is isolating a section of the loop, and if used under every analogue Sensor on the loop, none would be lost if a single short circuit was to occur.

The YBO-R/SCI does not use an address, and has the same wiring configuration as the YBN-R/3 Sensor Base making it very simple to install. The YBO-R/SCI can also be used without a Sensor; a cover can be fitted to conceal the wiring connections (see below). The device is also available as a DIN Rail mountable unit.

Specification	
Ordering Codes	YBO-R/SCI (Base) CHQ-SCI/DIN (Din Rail Version) S/I-BC (Base Cover)
Operating Voltage	17 - 41Vd.c.
Quiescent Current (typ)	50µA
Current In Short Circuit	<10mA
Maximum Short Circuit Current	1A
Operating Temperature Range	-10°C to + 50°C
Storage Temperature Range	-30°C to + 60°C
Maximum Humidity	95%RH - Non Condensing (at 40°C)
Colour / Case Material	(Base) Ivory White / ABS
	(DIN Rail Version) Green / ABS
Maximum Number of Isolators per Loop	127
Weight (g) / Dimensions (mm)	(Base) 85 / 100 (diameter) / H13
	(DIN Rail Version) 122 / L119 x W24 x H108
Fixing Centres (mm)	48 ~ 74